

KIT K250004
Anti Two-Block Switch Assembly with Connector
hydraulic cranes

Contents

ATB switch assembly – hardwired
ATB switch connector M phoenix K250060
ATB switch mounting bracket K250062
Support sheet

Tools

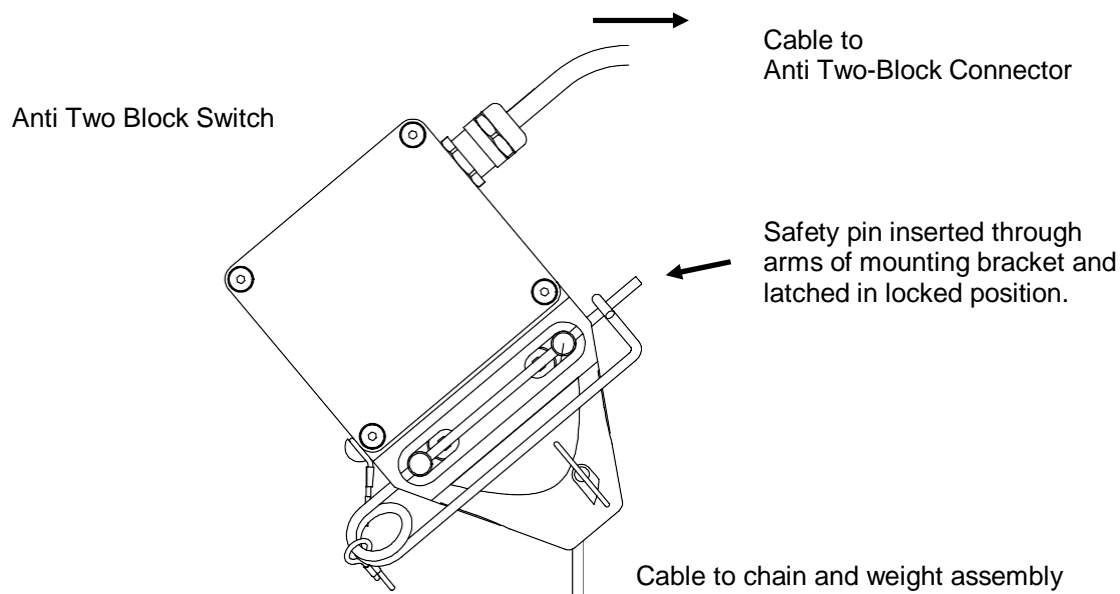
The Ant Two-Block Switch Kit - K250004

The K250004 ATB Kit is used to install the ATB switch and connector on the main boom following installation of the ATB Mounting Bracket (K250062).

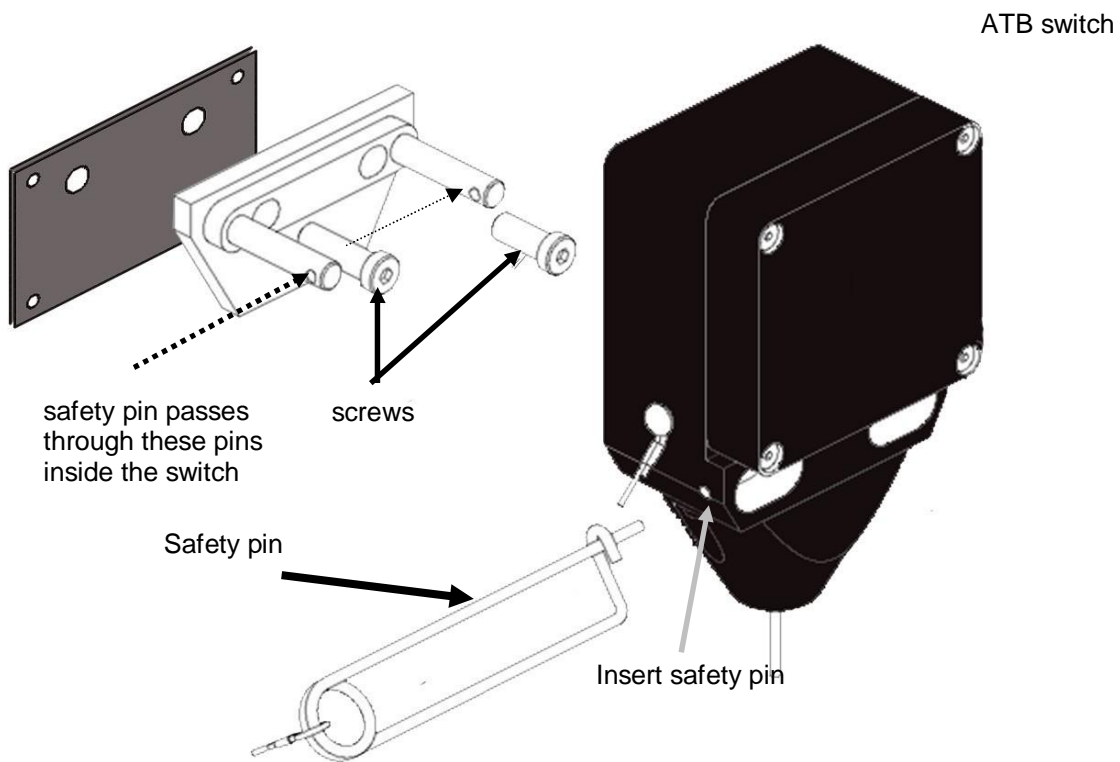
Installing the Anti Two-Block Switch

Look carefully at the Anti Two-Block switch, as supplied, with two attached cables, and an attached safety pin. Note that the ATB switch is the same on both sides and can be mounted on either side. The gray Anti Two-Block cabling at the top of the switch connects to the ATB connector. The silver, braided cable exits the bottom of the ATB switch and connects to the chain and weight assembly.

1. Refer to the illustration below. Unclasp and remove the safety pin from the Anti Two-Block Switch. Release and set aside the lockout pin and red lockout tag and the plastic bag containing the clevis and cotter pins.



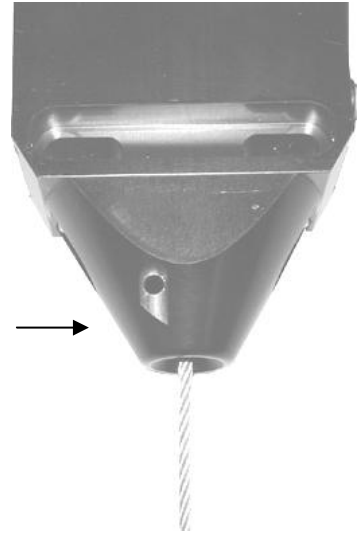
2. Slide the Anti Two-Block switch from either side onto the arms (as shown below) of the mounting bracket, chain side down with the ATB connector cabling exiting at the upper side of the switch.
3. Insert the safety pin in the lower front slot of the switch. As the pin goes through the slot, it passes through the holes on the projected arms of the mounting bracket, connecting the switch to the holder. When fully inserted, the open pin exits the other side of the switch.
4. Close the safety pin, locking the ATB switch to the mounting bracket.



Deactivating the Switch (Crane Lockout)

1. To deactivate the switch, forcefully bend and pull down the Anti Two-Block cable exiting from the base of the switch. As this is done, insert the lockout key into the hole at the base of the Anti Two-Block switch. Pass the lockout key through the hole to the other side of the switch, locking the lockout key in place. When the key is in place, always attach the red warning tag to the safety pin to alert the user that the switch is deactivated.
2. To release the lockout key, forcefully pull the chain down and pull out the lockout key.

Insert lockout key here →



Review the picture showing the anti two-block switch mounted on the boom head with the lockout key and red flag attached.

The lockout key must be removed before the anti two-block switch can be operated. The red flag must be attached ONLY when the lockout key is in place.

